

## **Historic, Archive Document**

Do not assume content reflects current scientific knowledge, policies, or practices.



67-53

LIBRARY  
RECEIVED  
★ OCT 7 - 1944 ★  
U. S. Department of Agriculture



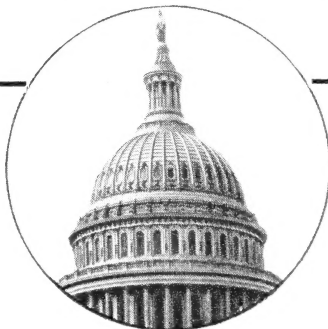
# *Bolgiano's*

**Selected BULBS, PLANTS, AND SEEDS**

*for 1944 Fall Planting*

**CAPITOL PARK  
LAWN GRASS SEED**

*The Nation's Pride*



**F. W. BOLGIANO & CO.**

411 New York Ave. N. E.

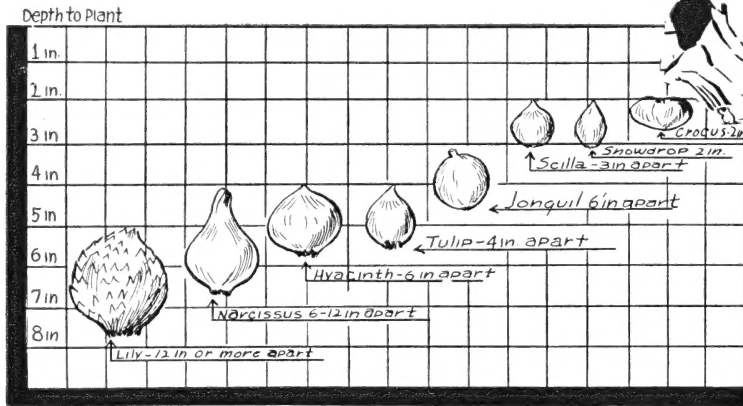
607 E St. N. W.

**WASHINGTON 2, D. C.**

# How to Plant Bulbs

## SAVE THIS CHART

It shows the depth at which different bulbs should be planted



## HOW TO PLANT

**Outdoor Culture.** Plant the bulbs as soon after September as possible, to enable the roots to make good growth before the cold weather sets in. They require a moderately rich soil. For best results, apply Loma, Vigoro, Sheep Manure or Bone-Meal. How far apart and how deep to plant the different bulbs is shown in the accompanying chart.

**Indoor Culture.** Plant hyacinths, tulips and narcissus in a sandy soil. For forcing, bulbs should be planted from September until November, the earlier they are potted the better. After they are potted they may be set outdoors and covered with a few inches of soil until freezing weather then brought into a cool cellar and watered occasionally. If not

possible to set them outdoors they may be placed in a cool cellar, covered with soil and watered regularly. When the roots are well developed the bulbs may be brought into a cool room where they will flower very quickly.

### **Growing Paper-White Narcissus in Water.**

Place a dozen bulbs in a shallow bowl, cover with small stones and keep filled with water. Place a few small pieces of charcoal in the bottom of the bowl to keep the water from fouling. Keep in a moderately temperate room. They require no care, no attention. They keep on growing and produce beautiful flowers in about six weeks. Plant bulbs at two-week intervals for a succession of blooms.

## HOW TO ORDER

**Address All Mail** to F. W. Bolgiano & Co., 411 New York Ave. N. E., Washington, D. C.

**Your Name and Address** should be written plainly on the Order Blank which accompanied this Catalogue.

**Our Terms** with customers not having an account are always cash with order. We do not send nursery stock C. O. D.

**Money** can be sent at our risk by Post Office or Express Money Order, New York or Chicago Draft, or by Registered Letter. We cannot hold ourselves responsible for cash sent loose in letters.

**Postage and Express Charges. All Bulbs** will be sent by Mail, charges prepaid, when ordered

at single or dozen rates. At 100 rates and over add 5 per cent to the cost of the bulbs to cover carrying charges. Refer to page 12 for Postage and packing on plants.

**Give Full Directions** always, whether shipment is to be made by Freight, Express or Parcel Post.

**Express or Freight** shipments should have the name of the station plainly given where different from the post office.

**Non-Warranty.** We give no warranty, expressed or implied, as to the productiveness of any seeds, bulbs or plants we sell, and we will not be in any way responsible for the crop. Our liability in all instances is limited to the purchase price of the seeds, bulbs or plants.

## PLEASE NOTE

All Bulbs listed in this Catalogue are subject to crop-shortage, and some varieties may not be available at all. We are unable to determine delivery at the time Catalogue is printed. Under these circumstances, may we strongly urge that your orders be placed early.



## BOLGIANO'S "Capitol Park" LAWN GRASS SEED and Fall Seeding Makes Better Lawns THE NATION'S PRIDE

We can say with pride that it is the accumulated experience of fifty years that has made possible the development of the "Capitol Park" Lawn Grass Mixture. It contains a carefully selected well-balanced blend of high quality re-cleaned seed. Through the years we have learned that the finest lawns for the Washington area are those made of fine bladed deep-rooting grass. It is an easy matter to have a good-looking lawn in spring but it is the year-around test that determines the quality of good lawn seed. We are proud of our Capitol Park Lawn Seed and we believe you will find this leader in the Washington area the answer to your lawn problem.

**Lb. 50c.; 3 lbs. \$1.40; 5 lbs. \$2.25; 25 lbs. \$10.00; 100 lbs. \$39.00**

### BOLGIANO'S "WHITE HOUSE" SHADY LAWN GRASS SEED

*The Grass That Will Grow in Shady Places*

To provide a turf for shady places which would match the turf of our Capitol Park Lawn Grass in the sun we experimented with grasses best adapted for growing in the shade until this formula was perfected. The resulting White House Shady Lawn Seed has removed cause for worry about those once bad places under trees.

**Lb. 65c.; 5 lbs. \$3.00; 25 lbs. \$13.25; 100 lbs. \$50.00**

Prices quoted on grass seed do not include postage. If postage is included with order, seed will be sent by Parcel Post, otherwise shipment will be made by Express Collect.

### BOLGIANO'S "FAIRGREEN" LAWN GRASS SEED

*A Superior Mixture with Creeping Bent*

Selecting grasses capable of producing a dense velvety lawn and resistant to dry summer weather, we believe we have in Fairgreen a permanent turf mixture which is unsurpassed, especially on slopes and terraces.

**Lb. 75c.; 5 lbs. \$3.50; 25 lbs. \$16.25; 100 lbs. \$62.00**

### HORMONE-TREATED LAWN SEED

Treating seeds with Rootone Hormone Powder serves to augment the natural hormones which stimulate root-formation and top-growth. In our Hormone-treated Lawn Grass Mixture we use only the best varieties of seed, including Bent Grass.

**Lb. 85c.; 5 lbs. \$4.00; 25 lbs. \$18.75**

**LOMA.** Beautifies lawns and gardens. The best thing on earth for lawns and gardens.

#### 5-10-5 Lawn

100-lb. bag.....	\$4 00
50-lb. bag.....	2 50
25-lb. bag.....	1 50
10-lb. bag.....	85

**VIGORO.** Complete plant-food for Lawns, Flowers, Shrubs, Trees and Vegetables.

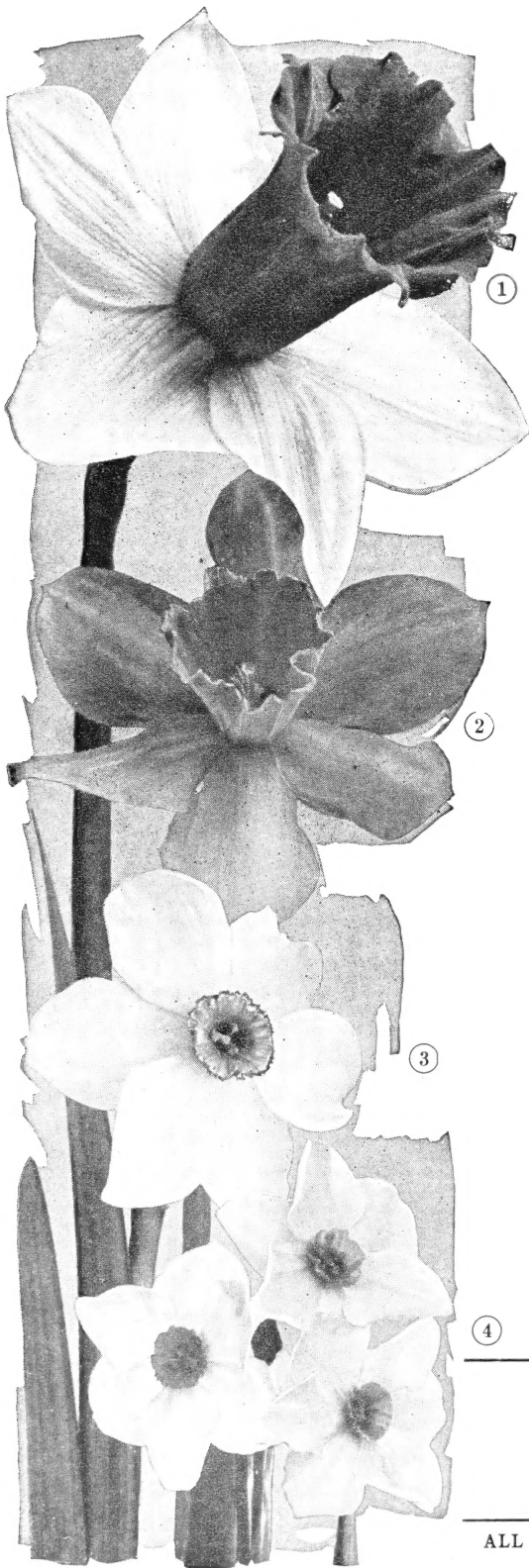
#### 4-12-4 Lawn

1 lb. ....	\$0 10	25 lbs. ....	\$1 50
5 lbs. ....	45	50 lbs. ....	2 50
10 lbs. ....	85	100 lbs. ....	4 00

Write for Our Free Booklet "How to Make and Maintain a Lawn"

# American-Grown

## DAFFODILS OR NARCISSUS



No garden is complete without a liberal planting of Daffodils or Narcissus. Perfectly hardy, they grow and produce abundantly in almost any position, sun or shade, moist or dry. They are equally suited to pot culture for winter flowering and are unsurpassed for naturalizing.

**Note.** The trumpet, crown, or cup is the center of the flower; the perianth is the surrounding row of petals or wings.

### Large Yellow Single Trumpet Varieties

**Emperor.** This is one of the finest Daffodils in cultivation. Pure yellow trumpet of immense size; wide, overlapping, rich primrose perianth. 20 in. 20c. each; \$1.75 for 10; \$12.50 per 100.

**King Alfred.** One of the largest pure yellow Daffodils. Immense flowers of intense yellow; trumpet large and open with a deeply frilled mouth. Vigorous and free. 24 in. 25c. each; \$2.00 for 10; \$18.50 per 100.

**Olympia.** Perianth light chrome-yellow; high trumpet of deep chrome-yellow, heavily ruffled. Ranked as a leading cut-flower variety. 20c. each; \$1.85 for 10; \$17.00 per 100.

**Tresserve.** Large yellow perianth; rich yellow trumpet. Valuable exhibition variety. 20c. each; \$1.85 for 10; \$16.00 per 100.

### Bicolor Single Trumpet Varieties

**Spring Glory.** Clear white informal-type perianth, large trumpet of deep yellow reflexing at the edge. A vigorous grower. 20c. each; \$1.75 for 10; \$15.00 per 100.

**Van Waveren's Giant.** Enormous flower with deep yellow trumpet, well opened; primrose perianth with outer petals exceptionally broad and inner ones usually slightly twisted, making the flower more graceful. 35c. each; \$3.00 for 10; \$25.00 per 100.

**Victoria.** Perianth creamy white; trumpet large; broad and clear yellow. A good forcing variety. 20c. each; \$1.75 for 10; \$15.00 per 100.

### White Trumpet Varieties

**Mrs. E. H. Krelage.** Often referred to as the "White King Alfred." This is one of the finest pure white trumpet varieties. Very free flowering and a splendid exhibition variety. 30c. each; \$2.75 for 10; \$22.50 per 100.

### TYPES OF DAFFODILS

1. LARGE TRUMPET DAFFODIL
2. MEDIUM TRUMPET DAFFODIL
3. POETICUS NARCISSUS
4. POETAZ NARCISSUS

ALL PRICES IN THIS CATALOGUE ARE SUBJECT TO CHANGE WITHOUT NOTICE

# DAFFODILS • *The First Call of Spring*

## Double Varieties

**Cheerfulness.** Fine double, creamy white blooms of the cluster-flowering class; has faint suggestion of pale yellow at base. A splendid garden and exhibition variety. 15c. each; \$1.40 for 10; \$13.00 per 100.

**Twink.** A lovely, double, pale primrose-yellow Daffodil with bright orange center. 25c. each; \$2.25 for 10; \$17.50 per 100.

**Mary Copeland.** One of the finest. The long petals are pure creamy white, with a golden ray down the center, interspersed with shorted petals of lemon and brilliant orange, giving a three-color effect. Unsurpassed for the garden or the show bench. 35c. each; \$3.25 for 10; \$7.50 for 25.

## Medium Trumpet Varieties

**Conspicuous.** Barri. Broad, spreading pale yellow perianth; darker yellow cup, edged scarlet. Excellent for cutting. 10c. each; 95c. for 10; \$9.00 per 100.

**Croesus.** Incomparabilis. A most striking Daffodil. Round, imbricated primrose perianth; widely expanded deep red crown. 16 in. 18c. each; \$1.60 for 10; \$13.00 per 100.

**Diana Kasner.** Barri. Pure white perianth with golden yellow cup frilled blood-red. Very free flowering. 18c. each; \$1.50 for 10; \$11.00 per 100.

**Sir Watkin.** Incomparabilis. A popular variety and perfectly hardy. Flowers have a deep primrose-yellow perianth and a more deeply tinted yellow cup or trumpet. 20 in. 15c. each; \$1.35 for 10; \$12.00 per 100.

## Narcissus Leedsii

### Short Trumpet with White Perianth

**Silver Star.** Fine broad white perianth; wide, deep trumpet of creamy white. Free flowering. 20c. each; \$1.75 for 10; \$14.00 per 100.

## Poet's and Poetaz Narcissus

**Poeticus ornatus** (Poet's Narcissus). A splendid flower with a pure white perianth and a white eye, margined bright crimson. A long-stemmed variety for garden and for forcing. 12c. each; \$1.00 for 10; \$8.50 per 100.

**Poeticus recurvus** (Pheasant's Eye). Pure white perianth; cup, deep orange-red. Late flowering; excellent for massing. 10c. each; 95c. for 10; \$8.50 per 100.

**Poetaz, Laurens Koster** (Cluster-flowered Narcissus). Clusters of 5 to 7 large, pure white blooms with orange-yellow cups. 15c. each; \$1.35 for 10; \$12.00 per 100.

## Special Narcissus Mixture

A special mixture of all varieties for growing in masses or for mixed borders or among the shrubbery. A clump of these planted in your garden will produce a fine lot of flowers for table and house decorations. Particularly hardy and will flourish and increase for years. 75c. for 10; \$5.75 per 100.

## Paper-White Narcissus

Dishes of these, grown in pebbles and water, can be had in bloom continuously from Thanksgiving until Easter.

**Medium-size bulbs,** 7c. each; 65c. for 10; \$6.00 per 100.

**Large-size bulbs,** 10c. each; 85c. for 10; \$7.00 per 100.

## Sweet-scented Jonquils

**Campernelle rugulosus.** Large rich yellow flowers, borne very freely. Very effective in deep pockets near the base of rockeries. 12c. each; 95c. for 10; \$8.00 per 100.



NARCISSUS AND TULIP PLANTING

ALL PRICES SUBJECT TO MARKET CHANGES

F. W. BOLGIANO & CO., WASHINGTON, D. C.



May-flowering Tulips in all shades of the rainbow are a welcome sight in the spring garden

## Darwin Tulips—May-flowering

The splendid form, exquisite coloring and enormous size of the Darwins make them the favorite of all Tulips. They belong to the May-flowering or late-blooming class and produce their gigantic flower-cup on long, stiff stems, 20 to 30 inches above the broad foliage.

**Afterglow.** Rosy orange, salmon-tinted margins. 26 in.

**Baronne de la Tonnaye.** Vivid rose-pink, shading paler toward outer edges of petals. 26 in.

**Bartigon.** Carmine-red. 26 in.

**Bleu Aimable.** Bright violet-purple, shaded steel-blue.

**City of Haarlem.** Cardinal-red, with distinct blue base; large.

**Clara Butt.** Bright salmon-rose; lovely color and shape. 22 in.

**Dream.** Soft rosy mauve on heliotrope ground. 27 in.

**Farncombe Sanders.** Brilliant rose-scarlet. 26 in.

**Jubilee.** Deep rich blue, shaded purple; large; egg-shaped flowers.

**La Tulipe Noire.** Large; glossy black, highlights maroon.

**Madame Krelage.** Bright rose, light border; large flower.

**Pride of Haarlem.** Brilliant carmine-rose; very large. 26 in.

**Princess Elizabeth.** Soft lilac-rose, edges of paler shade. 26 in.

**Rev. H. Ewbank.** Soft lavender-violet. 25 in.

**Sundew.** The fringed crimson Darwin.

**William Copland.** Fine forcing variety. Delicate lavender.

**William Pitt.** One of the largest brilliant carmine. 24 in.

**Yellow Giant.** New golden yellow Darwin. 28 in.

**Zwanenburg.** Large; pure white.

**Darwin Tulips, Bolgiano's Superior Mixture.**

All Darwin Tulips, \$1.70 for 10; \$15.75 per 100

ALL PRICES SUBJECT TO MARKET CHANGES



# TULIPS *make a parade of color in the Garden*

## Cottage Tulips — May-flowering

- Carrara.** Purest white; ivory stamens.  
**Dido.** Orange-red changing to orange-yellow. 30 in.  
**Inglescombe Pink.** Delicate rose-pink, tinted salmon. 22 in.  
**Inglescombe Yellow.** Perfect flowers of full, rich yellow. 22 in.

- Mrs. Moon.** Deep yellow reflexed pointed petals. 25 in.  
**Picotee (Maiden's Blush).** White margined carmine-rose.  
**Red Rocket.** Tall. Brilliant scarlet. 28 in.  
**Rosabella.** Luminous rose with broad pink edge, inside beautiful shell-pink on creamy white base.

All Cottage Tulips \$1.80 for 10; \$16.75 per 100

## Breeder Tulips — May-flowering

These fine old May-flowering Tulips are exceedingly popular. They are very similar to the Darwins in their tall, strong growth, but with even larger flowers. They bloom about the same time as the Darwins, but have an entirely different range of colors, comprising bronze, terra-cotta, orange, brown and other artistic tones.

- Bronze Queen.** Buff, tinged bronze.  
**Dom Pedro.** Coffee-color.  
**Louis XIV.** Rich dark purple with a broad margin of golden bronze.

- Panorama.** Reddish mahogany. Very large forcer.  
**Prince of Orange (Sunset).** Terra-cotta with orange edge.  
**Yellow Perfection.** Olive-yellow color.

All Breeder Tulips, \$1.80 for 10; \$16.75 per 100

## Single Early Tulips

Ready for Delivery in September

- Couleur Cardinal.** Rich, glittering cardinal-red.  
**Cramoisi Brilliant.** Large; glowing scarlet with yellow base.  
**De Wet (Fireglow).** Golden yellow flushed with orange-scarlet.  
**Diana.** Pure glistening white.  
**Fred Moore.** Brilliant apricot-orange shaded scarlet.  
**Keizerskroon.** Bright red with broad golden yellow border.  
**Prince of Austria.** Clean orange-red; sweet scented.  
**Prosperity.** Fine rose-pink.  
**Rising Sun.** Deep golden yellow.  
**Van der Neer.** Handsome violet-purple blooms. Long stems.  
**Yellow Prince.** The best bright yellow.

All Single Early Tulips, \$1.80 for 10; \$16.75 per 100

## Double Early Tulips

- Boule de Neige.** Large peony-like, pure white flower. 10 in.  
**Electra.** Rosy violet. 12 in.  
**Mr. Van der Hoef.** Pure golden yellow; large flowers. Good forcer.  
**Murillo.** Delicate rose-pink, flushed white.  
**Orange Nassau.** Orange-red. A sport from that popular variety, Murillo.  
**Peach Blossom.** Deep rosy pink, deepening with age to a deep rose.  
**Tearose.** Soft yellow, flushed salmon.

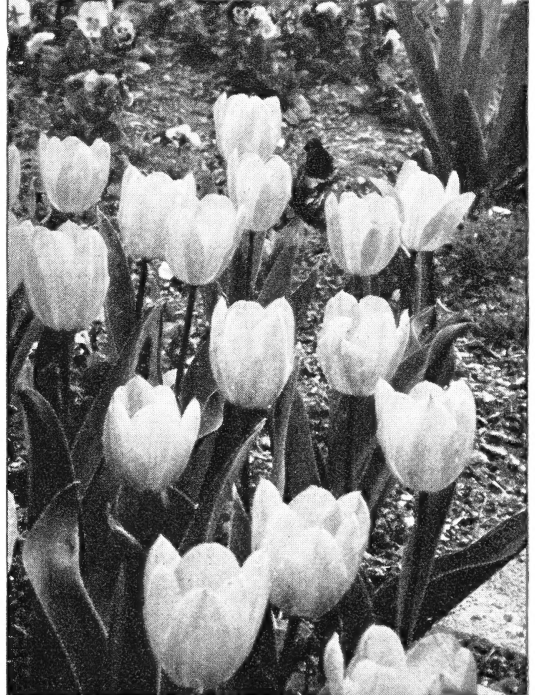
WRITE FOR PRICES

ALL PRICES SUBJECT TO CHANGE  
WITHOUT NOTICE

*If unable to supply items, will refund or substitute. No price, indicates out for the duration, or limited supply*

## Parrot Tulips

- Fantasy.** Beautiful warm pink that delights everyone. An outstanding rare variety. \$2.00 for 10; \$4.75 for 25.



TULIP, DE WET

# Spring-Flowering BULBS



GRAPE HYACINTH

*The first  
to Bloom  
in the  
Spring!*



SNOWDROP (Galanthus)

## For the Garden, Rock-Garden and Naturalistic Planting

Spring bulbs are among the most eagerly awaited flowers of the whole garden, for they announce a new growing season. They may be planted among perennials, at the edge of a shrub border, or on a grassy slope where they can produce a naturalistic effect. They add a great deal to the spring rock-garden.

### **ERYTHRONIUM** (Dog's-Tooth Violet), **Mixed.**

Charming woodland plants with nodding lily-like blooms that vary from greenish white to pure white, pink, lavender, lemon-yellow and orange-yellow. Foliage mottled brown in some sorts. These interesting spring flowers succeed in any light soil, especially in partial shade, and profit by a winter mulch of leaves or litter. Plant about 4 inches deep. Good mixture of colors. 8c. each; 70c. for 10; \$6.00 per 100.

**IRIS reticulata.** An early-blooming variety coming out just before the crocuses. The blooms are a rich violet color with bright yellow markings and have a violet fragrance. Prefers a warm, well-drained location. Much recommended for early forcing. Plant 6 bulbs in a 5-inch pan. Hardy with protection. Top-Size, 60c. for 3; \$1.85 for 10; \$4.00 for 25.

**IXIA** (African Corn Lily). These charming flowers, with their rich and varied hues, make a brilliant display in the spring when planted outdoors in a protected place. They may be grown indoors for winter blooms also. 8c. each; 70c. for 10; \$6.00 per 100.

### **MUSCARI** (Heavenly Blue Grape Hyacinth).

Numerous spikes of light blue flowers during April. Can be planted in masses or in the rock-garden, in either shade or sun. 7c. each; 60c. for 10; \$4.75 per 100.

### **SCILLA campanulata** (Wood Hyacinth).

Bears bell-like flowers on 15-inch spikes during early May. Does very well in shady situations. White, Blue, or Rose. 8c. each; 70c. for 10; \$6.00 per 100.

### **SCILLA sibirica** (Squills).

Exquisite rich blue flowers in early spring. A charming effect may be had by planting in conjunction with yellow crocus, chionodoxas and snowdrops. Write for prices.

### **SNOWDROPS.**

In early spring a snowy white bed of graceful Snowdrops is a lovely sight. They may also be used effectively in the center or at the edge of a bed with scillas or chionodoxas by intermingling them.

### **SNOWDROP, Single.**

Large lovely single white bells. 8c. each; 70c. for 10; \$6.00 per 100.

ALL PRICES SUBJECT TO CHANGE WITHOUT NOTICE

If unable to supply items, will refund or substitute. No price, indicates out for the duration, or limited supply

# HARDY LILIES *for fall Planting*

Most Lily bulbs being of late maturity are not ready for delivery until October and November. It is advisable to prepare the bed in early autumn and cover with 3 to 4 inches of mulch. This will prevent freezing and will enable you to plant bulbs safely on arrival.

**Candidum** (Madonna Lily). Produces a large mass of snow-white flowers on long stems, giving forth a delightful fragrance during May and June. Base-rooting. Plant as early as possible in the fall, covering with not more than 3 inches of dirt. *September delivery.* Extra-fine large bulbs, 75c. each; \$7.00 for 10.

**Pardalinum giganteum** (Sunset Lily). This beautiful Lily with its large racemes of yellow flowers, 14 inches across, tipped with bright red and spotted with brown, is a real treasure as it is easily grown and thrives in full sun or partial shade. It often reaches a height of over 8 feet with broad whorls of foliage. Blooms in July. Plant about 8 inches deep. *October delivery.* 40c. each; \$3.50 for 10.

**Philippinense formosanum.** Large, fragrant white blooms tinted rose on outside. Perfectly hardy, it blooms in September. Does best in a sunny location. 3 to 4 ft. Stem-rooting. Plant 8 inches deep. *October or November delivery.* 40c. each; \$3.50 for 10.

**Regale** (Regal Lily). A royal beauty. Flowers white, slightly suffused with pink, with a beautiful shade of canary-yellow at the center, blending out part way up the trumpet. The fragrance is fascinating. A splendid hardy Lily for the garden, flowering in July. Well-grown bulbs often produce 5 to 8 blooms. Stem-rooting. Plant 6 inches deep. *October or November delivery.* Large bulbs, 25c. each; \$2.00 for 10. Jumbo bulbs, 40c. each; \$3.75 for 10.

**Tenuifolium** (Coral Lily). Early-flowering. Beautifully shaded coral-red flowers and finely cut foliage. The petals are strongly recurved and of a waxy texture. Ideal for that shaded section of your rock-garden. Stem-rooting. Plant 4 inches deep. Flowers in June. 20 in. 20c. each; \$1.90 for 10.

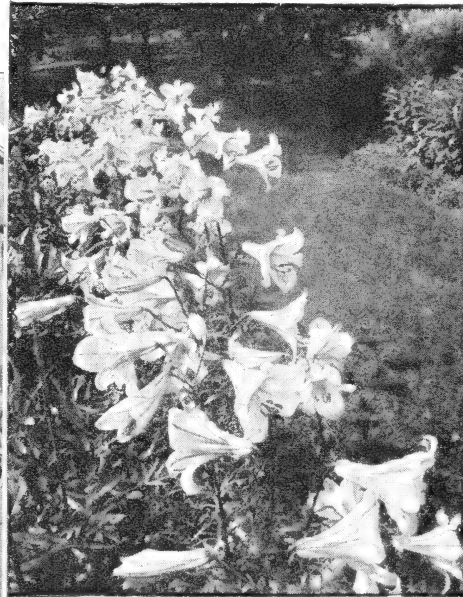
**Tigrinum splendens** (Tiger Lily). The finest form of Tiger Lily with the richest color. The large shapely flowers are of a rich dark salmon-orange spotted with glossy black. This Lily is very robust in habit and of easy culture. Blooms nearly all summer. Stem-rooting. Plant 6 to 8 inches deep. *October or November delivery.* 30c. each; \$2.75 for 10.

Lilies are an important feature of the summer garden. They have a patrician air about them that no other flower can quite duplicate.

The varieties we offer are not difficult to grow in the home garden. Plant them with hardy perennials or in front of a shrub border.



TIGER LILY



REGAL LILY



MADONNA LILY

In setting out your Lily bulbs be sure to dig the holes large enough. Absolutely essential for all Lilies is a well-drained location. They will grow in the sun, but light shade is better, with a ground-cover over the roots to keep the soil moist.

ALL PRICES SUBJECT TO CHANGE WITHOUT NOTICE

# CALLAS • FREEZIAS • OXALIS

## for Indoor Planting



**CALLA LILY, White (Æthiopica).** Pure white blooms of an attractive, unusual form and one of our best window plants. Pot bulbs in 6 to 8-inch pots as soon as received. Give an abundance of water, light, and heat and the results will be very satisfactory. 35c. each; \$3.00 for 10.

**CALLA LILY, Yellow (Elliottiana).** The Yellow Calla. Large, rich, deep golden flowers often 4 to 5 inches across at the mouth. Habit of growth and foliage like the old favorite White Calla except that the leaves of Elliottiana are spotted with white. Makes a very distinctive potted plant that is interesting to watch as its blooms unfurl. Ready in November. 35c. each; \$3.00 for 10.

CALLA LILY, YELLOW

## COLCHICUM

### Autumnale major

Autumn flowering. The flowers of this unusual plant resemble the Crocus. If planted in August or in September the bulbs will flower in a very short time, but the foliage will not appear until spring. They will bloom without soil or water if placed in a sunny window and may be planted outside afterward. 45c. each; \$1.25 for 3.



FREEZIA

**OXALIS, Mixed.** Suitable for pot-culture and winter blooming. Large pink, white, lavender, and yellow flowers, held well above dwarf sturdy growth. Keep close to light to prevent foliage growing too long. Bulbs, 5c. each; 40c. for 10; \$3.50 per 100.

**FREEZIA, Improved Purity.** Produces large sprays of snow-white, extremely fragrant flowers. Plant the bulbs in a mixture of loam and coarse sand, with a little bone meal. Monster bulbs 6c. each; 60c. for 10; \$5.00 per 100.

**FREEZIAS, Rainbow Mixture.** Clusters of yellow, blue, violet, mauve, pink and lavender flowers. 60c. for 10; \$4.75 per 100.

ALL PRICES SUBJECT TO CHANGE  
WITHOUT NOTICE

## AMARYLLIS

### Giant American Hybrids

Amaryllis bulbs planted in October or November should come into bloom in March. The huge trumpets on their tall, strong stems are very cheery in late winter, and no trouble to grow. Mixed colors only. Jumbo bulbs, suitable for planting in a 6-inch pot, 70c. each (by mail, 80c.); \$2.00 for 3; \$3.60 for 6.



AMARYLLIS

# IRIS • Queen of Perennials



Bearded Iris (Flag Iris)

## Iris Kaempferi (Oriental Iris)

These beautiful Iris prefer moist acid soil. The glorious flowers of the following varieties will surprise and please you.

- Azure.** Double; immense mauve-blue flowers.
- Betty F. Holmes.** Double; white blooms, yellow midrib.
- Blue Bird.** Single; rich blue.
- Catherine Parry.** Double; blue, overlaid rich purple.
- Columbia.** Double; blue with white veins, yellow center.
- Doris Childs.** Double; pearl-white, veined purple.
- Fascination.** Double; mauve-pink, lightly veined white.
- Gold Bound.** Double; white, gold-banded center.
- La Favorite.** Double; white veined blue, purple center.
- La Tosca.** Double; immense white flowers.
- Lavender Giant.** Single; lavender-blue.
- Mahogany.** Double; a lovely mahogany-red.
- Purple and Gold.** Double; violet-purple, golden throat.
- Queen of the Blues.** Single; pale blue, veined white.
- Red Riding Hood.** Single; a fine red variety.
- Rose Anna.** Double; light mauve, veined purple.
- Shadow.** Single; reddish purple.
- T. S. Ware.** Double; reddish violet flowers, white centers.
- Victor.** Double; light blue, veined blue.
- White Swan.** Single; pure white.

All above Oriental Iris, 50c. each; \$1.20 for 3 of one kind; \$4.40 per doz. of one kind

## Iris Sibirica (Siberian Iris)

Being smaller and more graceful these are greatly admired as cut-flowers. They are also easy to grow and bloom in May.

- Caesar's Brother.** Rich black pansy-purple.
- Perry's Blue.** Clear blue. Stout stems.
- Snow Queen.** A beautiful white. Very free flowering.

Unless otherwise noted, all Iris are 85c. for 3 of one kind; \$1.50 for 6 of one kind; \$3.00 per doz. of one kind. Single plants, 40c. each

## Iris Pumila

(Dwarf Iris or Miniature Flags)

A dwarf Iris that is ideal for the rock-garden. Blooms during March and April.

**Deep Blue**    **Light Blue**    **White**    **Yellow**

## Bearded Iris (Flag Iris)

The Rainbow Flowers are popular everywhere and have many admirers. Every garden should have a collection.

- Ambassador.** Standards bronze; falls maroon.
- Anne-Marie Cayeux.** Pink. Extra fine. 36 in.
- Black Wings.** Deep blue-black. Fine.
- Blue Triumph.** Fine pale blue. 42 in.
- Blue Velvety.** Velvety, best dark blue. 40 in.
- California Gold.** Tall; golden yellow.
- Cheerio.** Standards tan; falls velvety red. Fine.
- Clara Noyes.** Rich blend of Talisman rose.
- Copper Lustre.** Copper and gold blend.
- Dauntless.** Red-purple; tall and large. 40 in.
- Depute Nomblot.** Dyke's medal. Bronze. Tall.
- Grace Sturtevant.** Red purple; fragrant. 36 in.
- Gudrun.** Very large; pure white.
- Jean Cayeux.** A blend of browns.
- Naranja.** Rich yellow self.
- No-We-Ta.** Dainty pink blend. Exquisite. 32 in.
- Princess Beatrice.** Light lavender. Fine.
- San Francisco.** White, edged blue.
- Shot Silk.** Rich silky pink and gold; fragrant.
- Sir Michael.** Dark blue tone. Fragrant; massive. 48 in.
- Snow White.** White; good size, 36 in.
- Sunlight.** Soft yellow.
- Venus de Milo.** Fine new white. 42 in.
- William Mohr.** Lilac, veined manganese.

## Autumn-flowering Bearded Iris

- Autumn Dawn.** Gold and pink.
- Autumn Elf.** Standards cream; falls, light mauve.
- Autumn Haze.** Large; violet-purple.
- Autumn Queen.** Very pretty white. 18 in.
- Black Magic.** Intense deep blue-violet with a rich velvety black luster and sheen.
- Eleanor Roosevelt.** Deep red-violet.
- Sangreal.** Yellow fall bloomer. 28 in.
- Ultra.** Very fine ultramarine-blue. 15 in.

## Dutch Iris

One of the most easily grown bulbous plants. Place bulbs 4 to 6 inches deep in good sandy loam. Blooms in early June; lovely for cutting.

- Imperator.** Brilliant deep blue with a golden yellow blotch on each standard.
- Wedgwood.** Graceful large flowers of a beautiful even blue color. Easy to force.
- Yellow Queen.** Both the standards and falls are bright golden yellow.
- Mixed Colors.** A well-blended mixture.

All Dutch Iris, 65c. for 10; \$5.50 per 100

## Spanish Iris

Known as "Orchids of the Hardy Flower Garden." They grow from 18 to 24 inches high and produce their exquisite airy blooms during the last of May and through June. Plant the latter part of September. Mixture contains all colors. Bulbs, 60c. for 10; \$4.50 per 100.

ALL PRICES IN THIS CATALOGUE ARE SUBJECT TO CHANGE WITHOUT NOTICE

# HARDY PERENNIALS

for

## FALL PLANTING

**Culture:** A deep well-drained bed of enriched soil is essential to the proper growth of the plants. Care is taken in providing a suitable bed will repay you many times as you watch the succession of various beautiful, fragrant blooms through the seasons, year after year. They should be planted for best results from August through November, according to variety.

**PRICES:** Unless otherwise noted, all plants are 85c. for 3 of one kind; \$1.50 for 6 of one kind; \$3.00 per doz. of one kind. Single plants, 40c. each.

**POSTAGE ON PLANTS.** Add for postage and packing: Single plants 10c.; 3 plants 20c.; 6 plants 30c.; 12 plants 40c. We accept no responsibility for delays or conditions that may prove injurious to the contents.

### Delphinium (Perennial Larkspur)

We offer three distinct types of this popular flower: The hybrids provide the long spikes of beautiful bloom so popular for exhibition purposes; cut down after the first bloom, they will repeat in autumn. The *Belladonna* type is desirable to cut for mixed bouquets and blooms all season with the dwarf *Chinensis* providing desirable blue for bedding and cutting material all season. Delphiniums require rich soil in full sun.

**Belladonna.** Light blue. 3 to 4 ft.

**Blackmore & Langdon Hybrids.** Semi-double and double blooms in shades of blue, lavender, and purple. 4 to 5 ft.

**Chinensis, Tom Thumb.** Dwarf in habit, it produces several crops of exquisite blue flowers. 15 in.

**Lamartine.** Brilliant marine-blue. 3 to 4 ft.

**New Giant Pacific Hybrids.** This is an outstanding new strain with many shades of huge florets beautifully spaced on strong spikes. Mildew-resistant. The best Delphinium plants in existence. 55c. each; \$1.35 for 3.

**Giant Pacific Hybrid, Pure White.** *New.* Clear white individual florets often measure 3 inches across. 55c. each; \$1.35 for 3.

### Dianthus (Fragrant Pinks)

Reminiscent of other days when fragrant flowers were in vogue, the great number of *Dianthus* available today are still a source of color and delicious fragrance.

**Bobby.** Large flowers of deep pink with crimson centers. 8 in.

**Bristol Purity.** 1 ft. Double white flowers.

**Little Joe.** Large crimson blooms; delightful companion for Bobby. 6 in.

**Meg Gardner.** A new introduction bearing large white flowers with distinct red centers. June, July. 15 in.

**Old Spice.** Plant Patent No. 499. A new and choice introduction. Carnation-like salmon-pink flowers; clove-scented. Blooms freely in June and through the summer months. 1 ft. 55c. each; \$1.35 for 3.

**Rosy Hybrids.** Pink and red tones. May, June.

**Tiny Rubies.** A dainty little plant with small carnation-like flowers borne on stems 4 to 5 inches high. The color is either pink or deep rose-pink, depending on the exposure to sun.

**White Reserve.** Another top-notch white Carnation. June, July. 16 in.



Delphinium, New Giant Pacific Hybrids

### Aquilegia (Columbine)

One of the most valuable of the early-flowering perennials. The long-spurred blooms and lengthy stems are well adapted to use as cut-flowers, but they also produce a beautiful effect when massed in the garden. They do best in light soil in a sheltered location that gets the sunshine. 1 to 2 ft. May, June.

**Cærulea.** The Rocky Mountain blue Columbine. **Canadensis.** 15 to 18 in. Our native Columbine.

Reddish orange flowers in May and June.

**Chrysantha** (Golden Columbine). Yellow flowers with long spurs.

**Chrysantha, Silver Queen.** A top-notch pure white variety.

**Crimson Star.** Large flowers with rich crimson outer petals and pure white centers. Spectacular.

**Longissima.** 18 in. A native kind. Pale yellow coloring with amazingly long spurs.

**Mrs. Scott Elliott's Strain.** Outstanding for its wide range of color.

**Rose Queen.** Pink; long-spurred.

### Astilbe

**Fanal.** The 1½-foot plant of this novelty carries wonderfully beautiful spikes of fiery crimson flowers during May and June. *Astilbe* foliage is very attractive so that the plants are good looking at all times. 75c. each; \$2.00 for 3.

### Cypripedium (Lady's Slipper)

These natives can be made a part of a woodland garden or some shady corner of your garden where the soil is moist.

**Acaule.** Pink.

**Pubescens.** Yellow.

**Spectabile.** Charming pink species.

Unless otherwise noted, all plants are 85c. for 3 of one kind; \$1.50 for 6 of one kind; \$3.00 per doz. of one kind. Single plants, 40c. each

# Hardy Perennials for Fall Planting

## Dicentra (Bleeding-Heart)

Shade-loving plants with flowers of unquestioned charm. *Spectabilis* is the Bleeding-Heart of old-time gardens and should be in every garden with a shady spot. *Eximia* is a low-growing native fitting in here and there and provides attractive ferny foliage when not in bloom. Makes a good ground-cover.

**Eximia.** Fern-like foliage and pink heart-shaped flowers all season. Partial shade or full sun.

**Spectabilis.** Graceful pink, heart-shaped flowers on long slender stems in April and May. 55c. each; \$1.35 for 3.

## Doronicum (Leopards-Bane)

These gleaming yellow daisy-like flowers are a top-notch source of color in the spring border and rock-garden. For best results, grow them in partial shade.

**Excelsum.** 2 ft. The large yellow daisies are particularly effective in broad masses. April, May.

**Mme. Mason.** Compact in habit; noted for its large bloom. April, May.

## Hemerocallis (Day-Lilies)

Thriving almost anywhere, and not being bothered by either insects or disease, this is about as near a fool-proof garden plant as can be found. By planting our collection you can have bloom from May on, all through summer.

**Dr. Regel.** Rich orange-yellow flowers in May. Very fine for cutting.

**Flava** (Lemon Lily). Sweet-scented yellow flowers in June.

**Florham.** Large golden yellow flowers. Strong grower.

**George Yeld.** Flushed petals, sprinkled rose; rich orange sepals; 75c. each; \$2.00 for 3.

**Hyperion.** Large; canary-yellow. 75c. each; \$2.00 for 3.

**Imperator.** 4 ft. A distinct variety with rich orange-red coloring. July, August. 60c. each; \$1.50 for 3.

**J. A. Crawford.** Large; clear gold. 60c. each; \$1.50 for 3.

**Kwanso.** Large, double flowers of rich golden bronze shade.

**Ophir.** 4 ft. Its rich golden yellow coloring has made this a favorite variety. July. 75c. each; \$2.00 for 3.

**Thunbergi.** Much like *Flava* but flowers in July, a month later.

## Helleborus (Christmas Rose)

They grow best in rich soil and a shady location; unexcelled for the beauty of their flowers, their evergreen foliage, and their attractive appearance the year round.

**Niger.** 1 ft. Single white blooms flushed with pink, on sturdy stems. December to March. 85c. each; \$8.50 per doz.

**Orientalis Hybrids.** 1 ft. The Lenten Rose. The flowers, greenish white, pink, and purple, appear in February and March. Mixed shades only. 75c. each; \$2.00 for 3.

## Iberis (Hardy Candytuft)

Delightful little evergreen plants that show up well wherever planted. Many are used in rock-gardens and they make splendid border plants, furnishing closely packed white bloom in spring.

**Little Cushion.** A miniature Candytuft growing only 4 inches high.

**Little Gem.** A dwarf compact form favored for borders.

**Sempervirens.** The Hardy Candytuft has many uses in the garden.

**Snowflake.** Large, pure white flowers on dwarf plants.

## Mertensia (Blue Bells)

**Virginica.** One of the desirable spring natives found in shaded or partly shaded locations. It thrives in shady spots in a garden with ordinary soil. Looks best when planted in good-sized groups.

## Paeonia (Peony)

A long-lived perennial, the plants growing larger and better year by year. They make a good showing in the garden and are favorite flowers for cutting. In planting, the crown should never have over 2 inches of soil over it. If planted deep they will not bloom.

**Avalanche.** Splendid white. Late.

**Baroness Schroeder.** French white, changing to pure white.

**Festiva Maxima.** Early white with crimson specks.

**Felix Crousse.** Ruby-red. Midseason.

**Georgiana Shaylor.** Rose-pink. Late.

**Karl Rosenfield.** The supreme red.

**Marie Crousse.** Soft salmon-pink.

**Mons. Jules Elie.** Large; pink. Early.

**Sarah Bernhardt.** Deep pink.

All above Peonies, 75c. each; \$2.00 for 3 of one kind; \$7.50 per doz. of one kind

**Cherry Hill.** Velvety garnet-red.

**La Lorraine.** Large; creamy white.

**Nanette.** White, golden stamens.

**Primevere.** Nearest to yellow.

**Richard Carvel.** Uniform bright crimson.

**Therese.** Marvelous soft pink.

**Walter Faxon.** Coral-pink.

All Above Peonies, \$1.00 each; \$2.75 for 3 of one kind; \$10.00 per doz. of one kind

## Papaver orientale (Oriental Poppy)

There just isn't any other plant which can take the place of Oriental Poppies. They are hardly, easy to grow and last when once well started. The pale varieties are enchantingly beautiful while the brightly colored ones are spectacular enough to please the most particular lover of gay flowers. Plant them in groups throughout the border for May and June color.

**Beauty of Livermere.** Crimson with black blotches.

**Cavalier.** Crinkly flowers of deep scarlet-red.

**Fairy.** Pale pink.

**Gold of Ophir.** Golden orange.

**Henri Cayeux.** Old-rose.

**Jeannie Mawson.** Sparkling geranium-pink.

**Lachs Konigen.** Peach-red, with pink cast.

**Perry's White.** Satiny white, crimson blotch at base of petal.

**Purity.** Pure soft pink.

**Wurtembergia.** Brilliant glowing rose-red.

All above Poppies, 45c. each; \$1.00 for 3 of one kind; \$3.50 per doz. of one kind

Unless otherwise noted, all plants are 85c. for 3 of one kind; \$1.50 for 6 of one kind; \$3.00 per doz. of one kind. Single plants, 40c. each

# Hardy Perennials for Fall Planting

## Phlox decussata

Colorful, fragrant Phlox are the glory of the summer garden, the large heads of colorful bloom appearing in July and lasting through August. Height varies from 1½ to 3 feet.

**Border Queen.** Large florets of deep watermelon-pink. Early. 1½ ft.

**Caroline Vandenburg.** Lavender-blue hybrid. Midseason. 2 ft

**Charles H. Curtis.** Sunset-red. 2½ ft .55c. each; \$1.35 for 3; \$5.00 per doz.

**Count Zepelin.** Each white floret has a red center. 2½ ft.

**Daily Sketch.** Salmon-pink florets marked with crimson. Midseason 2½ to 3 ft.

**Ethel Pritchard.** French mauve. Midseason. 2 ft.

**Flash.** Carmine-crimson with an orange center. 2 ft. 45c. each; \$1.00 for 3; \$3.50 per doz.

**Leo Schlageter.** Scarlet-red with an orange cast. Midseason. 2½ ft.

**Lillian.** Best described as cameo-pink; each floret has a blue eye. Early. 2 to 2½ ft.

**Miss Lingard.** White flowers delightful for cutting. Very early. 2½ to 3 ft.

**Mrs. Scholten.** Salmon-scarlet. Midseason. 2 ft.

**Painted Lady.** Delightful combination of silver-pink with salmon shading and cherry-red centers. Early. 2½ to 3 ft.

**Progress.** Light blue, with deeper purple-blue eye. 2½ ft. 55c. each; \$1.35 for 3; \$5.00 per doz.

**Starlight.** Violet-red florets shading lilac; white center. Midseason. 2 to 2½ ft.

**Thor.** The florets are a combination of salmon-pink with a scarlet glow and a red eye. Midseason. 2 ft.

**Tigress.** Salmon-scarlet. Midseason. 2 ft.

## Phlox subulata

(Moss or Mountain Pink)

Low spreading plants with attractive foliage. They cover themselves with a mass of tiny flowers in April and May. A leading rock-garden plant and desirable for wall gardening or they can be used as edgings.

**Alice Wilson.** New. Bright lavender-blue. Blooms again in fall.

**Atropurea.** Very showy brilliant red.

**Brightness.** New. Attractive bright pink. Good grower.

**Camla alba.** A lovely new white form that blooms very freely again during fall months. 45c. each; \$1.00 for 3.

## Primula (Primrose)

Perhaps the showiest of spring-flowering perennials are the lovely Primroses. They have a wide color range covering the entire spectrum.

**Acaulis, New Giant-flowering, Mixed.** A splendid new strain with large flowers of many different shades and colors.

## Super-Swiss Giant Pansy Plants

A mixture of the finest color combinations and attractive forms of Swiss Giant Pansies. Transplanting plants for setting out this fall for spring blooms. \$1.50 for 50; \$2.25 per 100; \$17.50 per 1000.

## Trillium (Wood-Lily)

**Grandiflorum.** The welcome white blooms of this early spring native plant are indispensable for color in the shady garden.

Unless otherwise noted, all plants are 85c. for 3 of one kind; \$1.50 for 6 of one kind; \$3.00 per doz. of one kind.

## Rudbeckia (Coneflower)

Tall-growing plant, bearing large daisies with cone-like centers. They are easy to grow in full sun in ordinary soil. Good background plants.

**Maxima.** Glaucous green leaves and bright yellow flowers 3 to 4 inches across, with a cone 2 inches high. Blooms all summer. 4 to 5 ft.

**Purpurea, The King.** A crimson-red form that can be combined effectively with White Lustre. 50c. each; \$1.20 for 3.

**White Lustre.** A new Coneflower with pure white petals and a bronzy gold cone. Starts to bloom in June and continues all summer. Stiff sturdy stems. 3 ft. 75c. each; \$2.00 for 3.

## Tradescantia (Spiderwort)

For shaded places the Tradescantias are very desirable. Varieties may be chosen that will give blooms from spring to autumn.

**Blue Stone.** Low-growing. Large, rich blue flowers.

**Iris Pritchard.** White flowers, heavily stained with azure-blue; blue center.

**Lilac Time.** Distinct light lilac color.

**Pauline.** Flowers are rosy mauve. A vigorous variety.

All Tradescantias, 45c. each; 3 of one kind for \$1.00

## PERENNIAL VINES

**BOSTON IVY.** Fast-growing. Clings to brick or stone. 50c. each; \$1.25 for 3.

**BITTERSWEET** (*Celastrus articulatus*). The Oriental variety. Covered with orange-yellow berries in fall. 50c. each.

**CLEMATIS paniculata.** Strong, rapid growth. Pure white, fragrant flowers. 50c. each; \$1.35 for 3.

**CLEMATIS Jackmani.** Large, rich purple blossoms. 75c. each.

**CLEMATIS, Duchess of Edinburgh.** Large, double, elegant white blossoms. 75c. each.

**CLEMATIS, Mme. Baron Veillard.** Large lavender flowers. 75c. each.

**CLEMATIS, Mme. Edouard Andre.** Splendid large flowers of a bright rosy carmine color. 75c. each.

**ENGLISH IVY.** 2¼-in. pot plants, \$1.75 per doz.; \$13.00 per 100.

**POLYGONUM Auberti.** (Silver Lace Vine). A fast-growing vine attaining a height of 25 feet. Foamy sprays of flowers in summer and fall. 65c. each; \$1.65 for 3.

**WISTERIA sinensis.** Produces early in the spring thousands of pendulous clusters of delicate violet-blue blossoms. 2 to 3 ft. 2-yr. plants. 75c. each.

**WISTERIA alba.** Same as above, only pure white. 75c. each.

## GROUND-COVERS

**PACHYSANDRA** (Japanese Spurge). A trailing plant, 6 to 8 inches high, forming a complete cover of bright, glossy green foliage and small spikes of flowers during May and June. \$1.75 per doz.; \$13.00 per 100.

**VINCA minor** (Periwinkle; Trailing Myrtle). An excellent dwarf trailing plant for carpeting the ground where it is too shady for other plants to thrive. \$1.75 per doz.; \$13.00 per 100.



# ROSES for Fall Planting

## Our Standard Popular Varieties All Everblooming

Strong 2-yr.-old field-grown plants  
\$1.00 each

Add 10 per cent for Express or Parcel Post Orders

**Ami Quinard.** Velvety crimson-maroon with soft black lustre.

**Editor McFarland.** Long-lasting, perfectly formed blooms of deep pink on fine stems; slightly fragrant.

**Etoile de Hollande.** The world's favorite red Rose. Large shapely flowers of rich red; unforgettable fragrance.

**Girona.** Multicolored. Lovely buds of Turkey-red and golden yellow. The outside row of petals becomes light Tyrian-rose and makes a lovely collar for the inner petals of soft golden yellow. Alluring, rich, attar-of-rose fragrance.

**Kaiserin Auguste Viktoria.** Pearly white, opening to large double white blooms.

**McGredy's Yellow.** Unfading canary-yellow flower of excellent form with a mass of gold anthers glorifying the center of the flower.

**Mrs. Pierre S. du Pont.** Beautiful flowers of rich deep yellow appear in profusion on low healthy plants. Spicy fragrance.

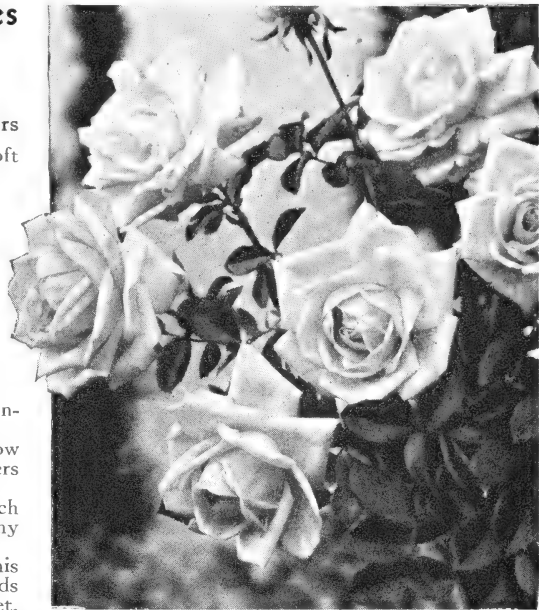
**Poinsettia.** Scarlet. You will be charmed with this beauty, with its lovely, well-formed, long buds and vividly colored flowers of poinsettia-scarlet, which suggested the name.

**President Herbert Hoover.** A lovely blend of orange and pink.

**Radiance.** Brilliant rose-pink.

**Red Radiance.** Deep rose-red.

**Talisman.** Pink, gold and yellow.



## New Hybrid Tea or Monthly Roses PATENTED VARIETIES

**California.** Pat. 449. Bronzy apricot; reverse of petals coppery pink. Small foliage. \$1.50 each.

**Charlotte Armstrong.** Pat. 455. Cerise to spectrum-red. Slender buds open into large blooms. \$1.50 each.

**Countess Vandal.** Pat. 38. Coppery bronze with gold. \$1.00 each.

**Crimson Glory.** Pat. 105. Deep velvety crimson. \$1.25 each.

**Eclipse.** Pat. 172. Rich gold; lovely long buds. \$1.25 each.

**Lowell Thomas.** Pat. 595. Deep golden yellow. \$2.00 each.

**Mary Margaret McBride.** Pat. 537. Rose-pink. \$1.50 each.

**McGredy's Sunset.** Pat. 317. Yellow and orange, flushed scarlet. \$1.25 each.

**Mme. Cochet-Cochet.** Pat. 129. Coppery pink. \$1.00 each.

**The Chief.** Pat. 456. Deep rose-pink. \$1.25 each.

## Outstanding Floribunda Roses

All Floribunda Roses \$1.00 each

**Betty Prior.** Pat. 340. Carmine outside, pink inside.

**Donald Prior.** Pat. 377. Scarlet flushed crimson.

**Gruss an Aachen.** Lovely 60-petaled creamy blooms take on carmine tints in the fall. Growth 2 feet.

**Permanent Wave.** Pat. 107. Deep rosy pink. Wavy petals.

**Poulsen's Yellow.** True yellow.

**World's Fair.** Pat. 362. Large velvety scarlet flowers; very hardy.

## Climbing Roses

**American Beauty.** Very early. Large, sweet-scented, light crimson or deep rose-pink flowers decorate the plant from base to top. \$1.00 each.

**Blaze.** Pillar. Pat. 10. Scarlet-crimson. Makes a gorgeous show for weeks in June. Under favorable conditions it often repeats in the fall. Quite hardy. \$1.25 each.

**King Midas.** Pat. 586. Large yellow flowers in clusters of 4 to 6 on strong climbing plants. \$1.50 each.

**Scarlet Climber.** Pillar. Midseason. The most popular vivid scarlet Rose. \$1.00 each.

**Summer Snow.** Pat. 400. Pillar. Profuse white blooms in June. Repeats all summer. \$1.50 each.

**Torch.** Small, semi-double flowers of scarlet-orange with white eyes, in clusters, on climbing plants. Vigorous, reaches 6 to 8 feet. Blooms in June. \$1.50 each.

## Acme Scientific Rose Spray



A "system" of spray treatment for roses and flowers of all kinds. Eliminates guess-work. Each set contains three separate items—A, B, and C—each scientifically made to combat one of the three major classifications of blight and insect pest. Mix all three together with

water. Use regularly. Result: Complete all-round protection. Surprisingly economical.

Sizes	Amount of Spray	Price
No. 3.	12 qts. ....	\$0 95
No. 6.	24 qts. ....	1 50
No. 24.	96 qts. ....	4 00
No. 48.	48 gals. ....	6 00
No. 96.	96 gals. ....	9 75

LIQUIDS NOT MAILABLE

# Hardy Flowering SHRUBS

Prices quoted include delivery in Washington, D. C., and vicinity but due to war conditions we may be unable to deliver for the duration. We do not ship Nursery Stock. Because there are so many conditions upon which successful growth is dependent, and over which we have no control, we cannot guarantee our Nursery Stock in any way whatsoever.

**ALTHÆA frutex** (Rose of Sharon). Double blooms from July until October. Pink, White, and Violet-Red. 3 to 4 ft., \$1.25 each. 4 to 5 ft., \$1.75.

**BEAUTY BUSH** (*Kolkwitzia amabilis*). Pink flowers in early May. 2 to 3 ft., \$1.00 each. 3 to 4 ft., \$1.75.

**Buddleia, Charming** (Butterfly Bush). *New*. Pink blooms all summer. 2-yr. plants, \$1.75 each.

**B., Ile de France** (Butterfly Bush). *New*. Long spikes of brilliant rosy violet-purple flowers all summer. 3-yr. plants, \$1.25 each.

**CALYCANTHUS floridus** (Sweet-smelling Shrub). 3 to 4 ft., \$1.25 each.

**CYDONIA japonica**. Scarlet flowers in early spring. 18 to 24 in., \$1.25 each. 2 to 3 ft., \$1.75.

**DEUTZIA, Pride of Rochester**. Large, double white flowers tinged with rose. 3 to 4 ft., \$1.25 each. 4 to 5 ft., \$1.75.

**FORSYTHIA intermedia spectabilis** (Golden Bell). Bright yellow bell-like flowers in early spring. Strong, erect habit. 3 to 4 ft., \$1.00 each. 4 to 5 ft., \$1.50.

**F. suspensa** (Weeping Golden Bell). Tall shrub of willowy growth. Graceful, arching branches covered with golden bells in early spring. 3 to 4 ft., \$1.00 each. 4 to 5 ft., \$1.50.

**HYDRANGEA arborescens grandiflorum**. White flowers in almost round heads. Early. 3 to 4 ft., \$1.00 each. 4 to 5 ft., \$1.50.

**H., Blue or Pink**. 15 to 18 in., \$1.00 each. 18 to 24 in., \$1.50.

**H., Peegee**. The old-time variety. 2 to 3 ft., \$1.00 each. 3 to 4 ft., \$1.35.

**LILAC, Old-fashioned Purple**. 2 to 3 ft., \$1.00 each. 3 to 4 ft., \$1.50. 4 to 5 ft., \$2.50.

**LILACS, French Hybrids**. Larger panicles and richer coloring than the old-fashioned varieties.

**Marie Legraye**. Pure white.

**Mme. Lemoine**. Large; double; white.

**President Grey**. Light blue.

**Souv. de Ludwig Spaeth**. Dark purple.

Above 4 varieties, 2 to 3 ft., \$1.00 each  
3 to 4 ft., \$1.75. 4 to 5 ft., \$2.50

**PEARL BUSH** (*Exochorda racemosa*). Spirea-like shrub with racemes of 2-inch white flowers in spring. 3 to 4 ft., \$1.00 each. 4 to 5 ft., \$1.50.

**PHILADELPHUS coronarius** (Sweet Mock-Orange). 3 to 4 ft., \$1.25 each. 4 to 5 ft., \$1.75.

**SNOWBALL** (*Viburnum Opulus sterile*). Old-time variety with large white flowers in balls in May or June. 3 to 4 ft., \$1.25 each. 4 to 5 ft., \$1.75.

**SPIRVA, Anthony Waterer**. Crimson flowers all summer. Dwarf. 15 to 18 in., \$1.00 each. 18 to 24 in., \$1.50.

**S. prunifolia**. White flowers. Early. 3 to 4 ft., \$1.25 each. 4 to 5 ft., \$1.75.

**S. Thunbergi**. Fine-leaved foliage; arching branches. Long sprays of white flowers in early spring. 18 to 24 in., \$1.00 each. 2 to 3 ft., \$1.35. 3 to 4 ft., \$1.75.

**S. Vanhouttei**. The most showy variety. May, June. 3 to 4 ft., \$1.25 each. 4 to 5 ft., \$1.75.

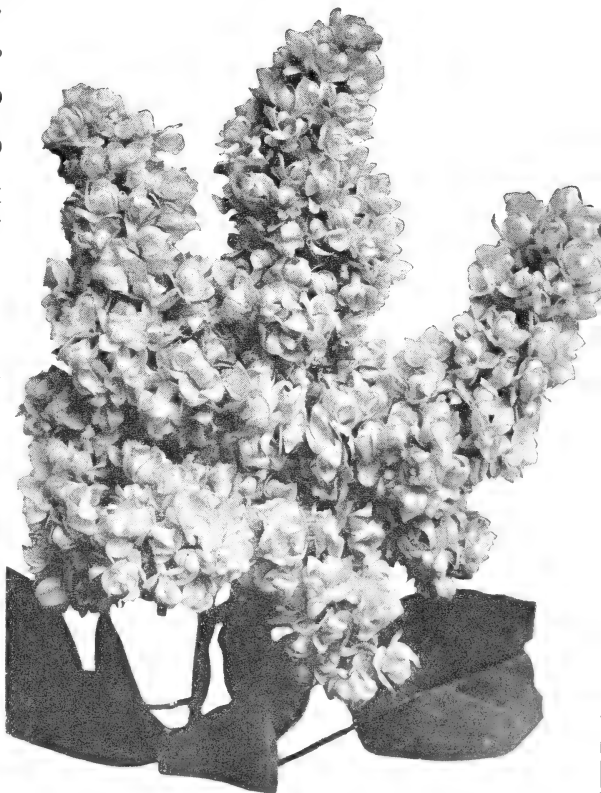
**WEIGELA rosea**. Beautiful, free-blooming shrub much used in borders and as specimen plants for the lawn. Pink flowers in May or June. 3 to 4 ft., \$1.25 each. 4 to 5 ft., \$1.75.

**W., Eva Rathke**. One of the most valuable. Flowers deep carmine-red. The mature plant reaches a height of 5 feet and is covered with rich green foliage. June, July. 3 to 4 ft., \$1.25 each. 4 to 5 ft., \$1.75.

## HEDGE PLANTS

**BARBERRY, Green-Leaf**. The best and most practical low hedge plant. It also makes a good footing or base planting near the house, or as a border plant in front of tall-growing shrubs. They can be allowed to grow naturally or pruned into any hedge form desired. 12 to 15 in., \$2.00 for 10; \$15.00 per 100. 15 to 18 in., \$3.00 for 10; \$20.00 per 100. 18 to 24 in., \$4.00 for 10; \$27.50 per 100.

**PRIVET, California**. The best-known hedge plant. Dark green foliage which remains on the plant until midwinter. Well-branched heavy stock, 1½ to 2 ft., \$1.50 for 10; \$10.00 per 100. 2 to 3 ft., \$2.50 for 10; \$15.00 per 100.



# BOLGIANO'S DWARF EVERGREENS

**ARBORVITÆ, Globe.** A round, compact-growing evergreen with dense foliage. 12 to 15 in., \$1.50 each. 15 to 18 in., \$2.25.

**JUNIPERUS chinensis Pfitzeriana.** Low-spreading, dark green branches. 15 to 18 in., \$3.00 each. 18 to 24 in., \$3.75. 2 to 2½ ft., \$4.50.

**J. communis depressa plumosa** (Purple Spreading Juniper). 12 to 15 in., \$1.50 each. 15 to 18 in., \$2.00.

**PINE, Mugho** (Dwarf Pine). Short, thick foliage on compact plant. Leaves slightly twisted. 15 to 18 in., \$2.50 each. 18 to 24 in., \$3.50.

**YEW, Spreading** (*Taxus cuspidata*). A very hardy tree and a valuable addition to the home grounds. 12 to 15 in., \$2.25 each. 15 to 18 in., \$3.00. 18 to 24 in., \$4.50. 2 to 3 ft., \$6.00.



# BOLGIANO'S TALL EVERGREENS

**ARBORVITÆ, American.** Tall, rapid grower. 18 to 24 in., \$2.00 each. 2 to 2½ ft., \$2.50. 2½ to 3 ft., \$3.25. 3 to 4 ft., \$4.00. 4 to 5 ft., \$5.00. 5 to 6 ft., \$6.50.

**A., Pyramidal.** Darker green, denser foliage and more slender of shape. 2 to 3 ft., \$3.00 each. 3 to 4 ft., \$4.50.

**FIR, Balsam.** Foliage dark above, pale beneath. 18 to 24 in., \$3.00 each. 2 to 3 ft., \$4.00. 3 to 4 ft., \$6.00.

**HEMLOCK.** Best evergreen for shade. 15 to 18 in., \$2.00 each. 18 to 24 in., \$3.00. 2 to 3 ft., \$4.00. 3 to 4 ft., \$5.50.

**JUNIPER, Irish.** Tall, narrow spires of blue-green foliage. Fast-growing. 3 to 4 ft., \$3.50 each. 4 to 5 ft., \$4.50. 5 to 6 ft., \$6.00.

**RETINOSPORA plumosa.** Graceful plume-like foliage of a pretty green. 18 to 24 in., \$2.00 each. 2 to 3 ft., \$3.00. 3 to 4 ft., \$4.00.

**SPRUCE, Norway.** Dark green, handsome tree reaching 30 to 50 feet. Good for hedges. 18 to 24 in., \$2.00 each. 2 to 3 ft., \$3.25. 3 to 4 ft., \$4.50.

**YEW, Upright** (*Taxus cuspidata capitata*). A fine fast-growing evergreen. 15 to 18 in., \$3.00 each. 18 to 24 in., \$4.00. 2 to 3 ft., \$5.50.

# ORNAMENTAL and SHADE TREES

**CRAB, Flowering** (*Malus floribunda*). 4 to 5 ft., \$4.50 each. 5 to 6 ft., \$6.00.

**DOGWOOD, Pink-flowering.** 2 to 3 ft., \$2.50 each. 3 to 4 ft., \$4.50. 4 to 5 ft., \$6.50.

**D., White-flowering.** 2 to 3 ft., \$2.00 each. 3 to 4 ft., \$3.00. 4 to 5 ft., \$4.50.

**ELM, American.** 6 to 8 ft., \$3.00 each. 8 to 10 ft., \$4.00. 10 to 12 ft., \$5.50.

**E., Chinese.** Broader base than American. Foliage small, dense. 5 to 6 ft., \$2.25 each. 6 to 8 ft., \$3.00.

**MAGNOLIA, Saucer** (*Magnolia Soulangeana*). Flowers white inside flushed with pink outside. 2 to 3 ft., \$3.50 each. 3 to 4 ft., \$5.00.

**Magnolia, Star** (*M. stellata*). Pure white star-like flowers. 18 to 24 in., \$4.25 each. 2 to 2½ ft., \$6.00.

**MAPLE, Norway.** 8 to 10 ft., \$4.00 each. 10 to 12 ft., \$6.00.

**M., Silver.** 6 to 8 ft., \$2.50 each. 8 to 10 ft., \$4.00. 10 to 12 ft., \$5.75.

**OAK, Red.** A stately tree with beautiful fall coloring. 6 to 8 ft., \$4.50 each. 8 to 10 ft., \$6.00.

**POPLAR, Lombardy.** 6 to 8 ft., \$1.00 each. 8 to 10 ft., \$1.50. 10 to 12 ft., \$2.00.

**WILLOW, Weeping.** 6 to 8 ft., \$2.50 each. 8 to 10 ft., \$3.75.

# Broad-Leaved EVERGREEN SHRUBS

**ABELIA grandiflora** (Bush Arbutus). Leaves dark green and glossy. Flowers white, funnel-shaped, tinged with pink, delicately sweet scented, borne in clusters from early spring until late autumn. 15 to 18 in., \$1.25 each. 18 to 24 in., \$1.75.

**AZALEA amœna** (Purple Azalea). A solid mass of flowers in the spring. Bronzy fall foliage. 8 to 10 in., \$1.65 each. 10 to 12 in., \$2.00.

**A., Hinodegiri.** Brilliant scarlet. 8 to 10 in., \$2.25 each. 10 to 12 in., \$3.00. 12 to 15 in., \$3.75.

**A., Snow.** Pure white. 8 to 10 in., \$2.25 each. 10 to 12 in., \$3.00. 12 to 15 in., \$3.75.

**BOXWOOD, American** (*Buxus sempervirens*). 8 to 10 in., 75c. each. 10 to 12 in., 90c. 12 to 15 in., \$1.65. 15 to 18 in., \$2.00.

**B., Old English** (*B. suffruticosa*). 4 to 6 in., 35c. each. 6 to 8 in., 60c. 8 to 10 in., 90c.

**LAUREL, Mountain.** 18 to 24 in., \$2.75 each. 2 to 2½ ft., \$3.50.

**RHODODENDRON carolinianum.** Pink. 18 to 24 in., \$3.00 each. 2 to 3 ft., \$4.50.

**R. catawbiense.** Large, purple flowers. 18 to 24 in., \$3.00 each. 2 to 3 ft., \$4.50.

**R. maximum.** Large white flowers. 18 to 24 in., \$2.50 each. 2 to 3 ft., \$4.00. 3 to 4 ft., \$6.00.

# FRUITS

for

## THE HOME GARDEN

A few fruit trees will be welcome on your grounds the year round. First of all, you plant them for their fruit, of course, and in these food-rationed days anything you can grow for the family larder is so much to the good. But your fruit trees will also give you springtime bloom and summer shade—a real investment in pleasure and profit.

### Apple Trees

2-yr.-old, \$2.00 each

#### WINTER VARIETIES

**Delicious Stayman** (Improved Winesap) **York Imperial**

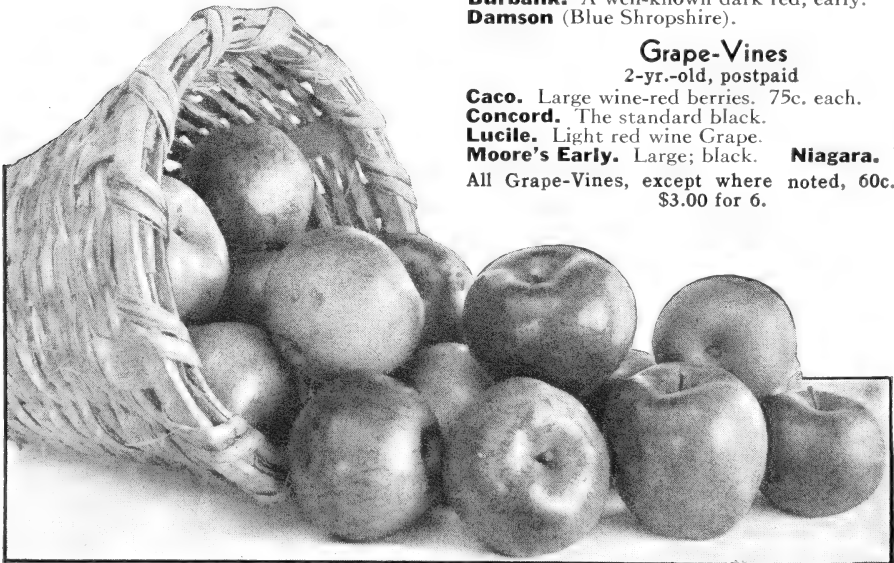
#### AUTUMN VARIETIES

**Grimes Golden.** Good size; yellow.

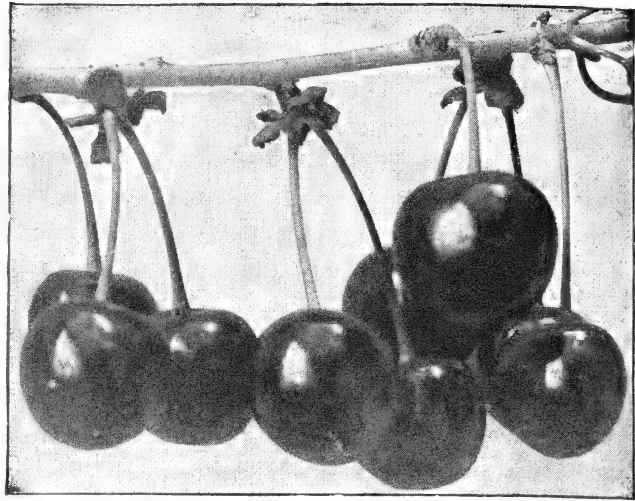
#### SUMMER VARIETIES

**Early Harvest.** Medium. Pale yellow.

**Yellow Transparent.** Earliest. White skin.



STAYMAN APPLES



EARLY RICHMOND CHERRIES

### Pear Trees

2-yr.-old, \$2.50 each

**Bartlett.** The best, large eating Pear.

**Seckel.** Small, sweet. Very popular.

### Cherry Trees

2-yr.-old, \$2.50 each

**Early Richmond.** Sour, light red fruit.

**Montmorency.** Sour variety.

**Napoleon.** Large; sweet. Midseason.

**Tartarian.** Large, sweet, black Cherries.

### Peach Trees

2-yr.-old \$2.00 each

**Belle of Georgia.** Large; white flesh.

**Carman.** White flesh. Semi-clingstone.

**Elberta.** Large; yellow flesh. Freestone.

### Plum Trees

2-yr.-old, \$2.50 each

**Abundance.** The popular early cherry-red.

**Burbank.** A well-known dark red, early.

**Damson** (Blue Shropshire).

### Grape-Vines

2-yr.-old, postpaid

**Caco.** Large wine-red berries. 75c. each.

**Concord.** The standard black.

**Lucile.** Light red wine Grape.

**Moore's Early.** Large; black. **Niagara.** White.

All Grape-Vines, except where noted, 60c. each; \$3.00 for 6.







# Special Notice:

We shall esteem it a great favor if you will give us in the space below the NAMES and ADDRESSES of any among your acquaintances who may be Market Gardeners or Truckers, or who grow vegetables and flowers in their own home gardens. We wish to send them our **MANUAL,**

**Total Amount**

**Names**

**Post Office**

**State**



**FROM**

**Name** .....

**Postoffice** .....

**State** .....

**Rural Route** ..... **Box No.** .....

**Street and No.** .....

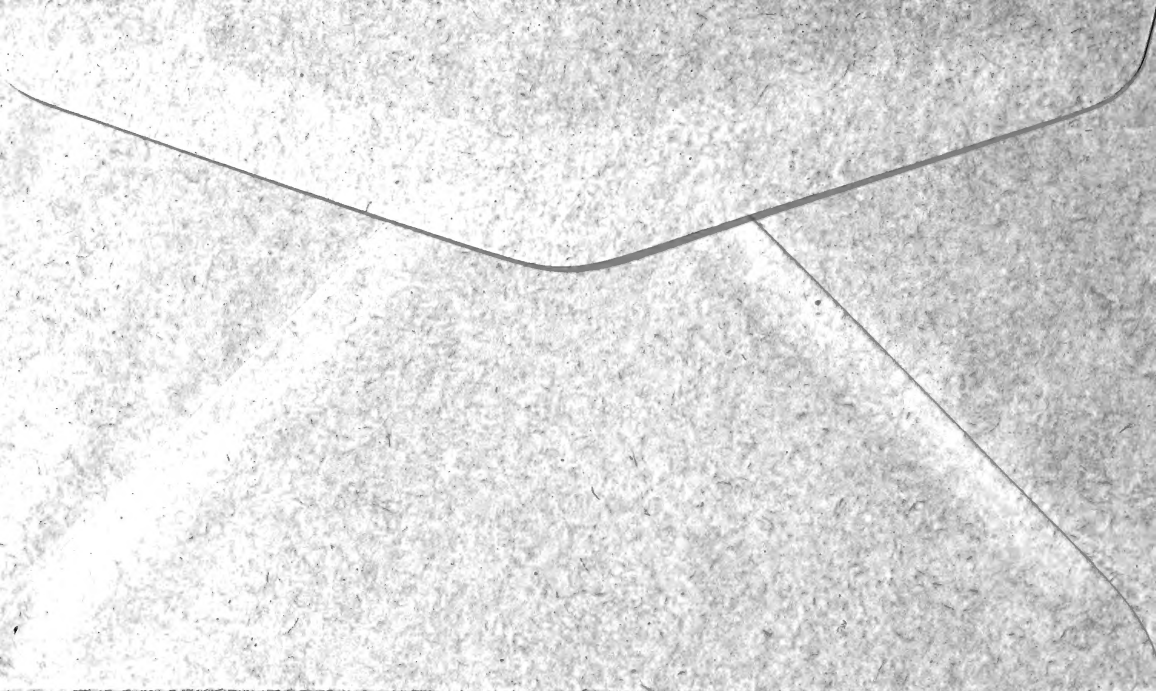
**PLEASE WRITE NAME AND ADDRESS PLAINLY**

PLACE  
STAMP  
HERE

**F. W. BOLGIANO & CO.**

**“Capitol City” Seeds**

**411 New York Ave. N. E. WASHINGTON, D. C.**



# FERTILIZERS • Insecticides, etc.

## ZOTOX Crab Grass Killer

### ZOTOX—A NEW DISCOVERY

The development of Zotox, a concentrated liquid chemical, introduces a new and revolutionary method of controlling crab grass. When diluted with water and applied as a spray, Zotox not only *kills the plant* of crab grass—it also *devitalizes the seeds*—thus checking reinfestation. This double action is what makes Zotox so effective.

### TRY THIS PROVED LAWN PROGRAM

1. Destroy crab grass with Zotox Crab Grass Killer.
2. Fertilize the lawn with a balanced plant-food.
3. Sow Bolgiano's Capitol Park Grass Seed.

*Zotox is sold in four convenient sizes:*

8-oz. Bottle \$1.00  
16-oz. Bottle \$1.50

32-oz. Bottle \$2.50  
5-lb. Bottle \$4.50



LIQUIDS  
NOT MAILABLE

### Gold Tag Bone Meal

100 lbs. \$3.75

### Gold Tag Raw Bone

125-lb. bag \$6.00

### Wizard Brand Sheep Manure

### Wizard Brand Cow Manure

"Makes Nature Hustle" and builds up your soil at the same time. 10 lbs. 50c.; 25 lbs. \$1.05; 50 lbs. \$1.75; 100 lbs. \$3.15.

### Michigan Peat Moss

Maintains moisture content in soil. Use for storing bulbs and tubers over dormant season; mulching flower and vegetable beds, for making lawns and keeping them in condition, and for many other purposes. \$2.25 per 100 lbs.

### Hyper-Humus Nature's Own Soil Enricher

An ideal top-dressing—makes heavy soils light and porous, light soils heavy. No odor. No weeds. 25 lbs. 50c.; 100 lbs. \$1.75; ton \$25.00.

### Well-rotted Cow Manure

Just the kind to use around your rose bushes and other plants this fall. 85c. per bus.

### DRICONURE

Three-quarters manure and one-quarter peat, both for soil-improvement and fertilizer together. 50-lb. bag \$2.60.

### Rootone

The Hormone "Powder" for Rooting Cuttings, for Dusting Seeds and Bulbs. Trial size 25c.; 2-oz. jar \$1.00; 1-lb. can \$5.00.

### Transplantone

A vitamin-hormone stimulant for plants. Invigorates old roots, multiplies new roots, reduces wilting, reduces loss in transplanting. Trial pkt. 25c.; 3-oz. can \$1.00; 1-lb. can \$4.00.

### JAPIDEMIC

### Milky Disease Spore Dust Controls Japanese Beetles

Treat your soil against these pests and save your turf from ruin. Will remain active in the soil for many years to kill the Japanese Beetle grubs. Japidemic is harmless to plants, human beings, and animals when used according to directions. One pound treats 4000 square feet. Ask about Japidemic now! Lb. \$4.50.

Write for prices on larger quantities



*Tulips* TO PLANT THIS FALL

F. W. BOLGIANO & CO.

WASHINGTON 2, D. C.